

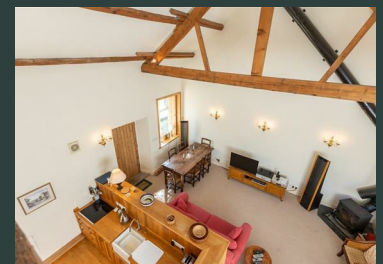


The Old Methodist Chapel Low Street | Lastingham, York

A delightful detached stone property in the heart of the North York Moors National Park village of Lastingham. The Old Chapel comprises an imaginatively converted two bedroom accommodation contriving a range of traditional features and modern improvements. The property enjoys a pleasant position within the popular and picturesque North York Moors National Parks village of Lastingham. No onward chain. Viewing essential.

- Two bedroom stone chapel conversion
- Ground floor bedroom with en-suite bathroom
- Sought-after village location
- No onward chain
- Spacious open plan living/kitchen area
- First floor bedroom with en-suite shower room
- Within the North York Moors National Park

Guide Price £230,000



The Old Methodist Chapel Low Street | Lastingham, York



ACCOMMODATION ON THE GROUND FLOOR

ENTRANCE LOBBY

5'2" x 4'8" (1.57m x 1.42m)

Front aspect window, steps up to:

OPEN PLAN KITCHEN/LIVING AREA

20'3" x 18'11" (6.17m x 5.77m)

Twin aspect double glazed windows with timber double glazed window to the front and rear both with window shutters, vaulted beam ceiling, cast iron wood-burning stove on slate hearth with exposed flue, range of fitted base and wall mounted solid wood kitchen units with timber work surfaces over, inset Belfast style ceramic sink with chrome mixer taps, 4 ring electric hob, plumbing for dishwasher, electric heater, door to outside rear.

BEDROOM 1

9'7" x 10'1" (2.92m x 3.07m)

Front aspect timber frame double glazed windows with shutters, Dimplex electric heater, built-in wardrobe/cupboard.

ENSUITE BATHROOM

Timber panelled bath with chrome mixers taps and shower over, wash hand basin, low flush wc, chrome heated towel rail, shaver point, extractor fan, built-in cupboard.

TO THE FIRST FLOOR

LANDING

With steps from the kitchen.

BEDROOM 2

8'11" x 10'2" (2.72m x 3.10m)

Side aspect single glazed window, galleried internal window across the ground floor living area, 2 no. built-in cupboards; one housing the hot water cylinder and one with plumbing for washing machine.

ENSUITE SHOWER ROOM

7'5" x 5' (2.26m x 1.52m)

Three piece suite comprising low flush wc, pedestal wash hand basin, electric heater, double shower cubicle with chrome fittings, sliding glazed door, tiled enclosure, skylight, extractor fan.



OUTSIDE

Forecourted hardstanding areas to the front with wrought iron gate and fence; enclosed walkway to side elevation, leads to a decked area to rear with steps to gravelled garden area.

SERVICES

We understand that the property is connected to mains electricity, water and drainage. The services have not been tested but we have assumed that they are in working order and consistent with the age of the property.

TENURE

We understand to be freehold with vacant possession upon completion.

VIEWING

Strictly by appointment with the Agents, BoultonCooper. Tel. 01751 472724.

LOCAL AUTHORITY

North York Moors National Park Authority,
The Old Vicarage, Bondgate, Helmsley
YO62 5BP. Tel: 01439 772700

North Yorkshire Council, County Hall,
Northallerton DL7 8AD. Tel: 0300 131 213

We are verbally informed the property lies in Band E. Prospective purchasers are advised to check this information for themselves with North Yorkshire Council 0300 131 2131.

ENERGY PERFORMANCE RATING

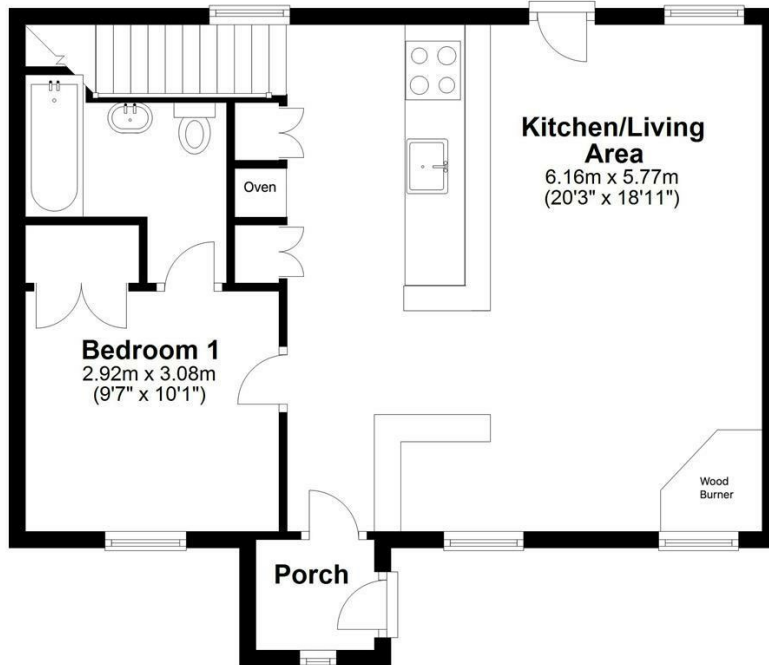
Assessed in Band F. The full EPC can be viewed online (www.gov.uk/find-energy-certificate) or at our Malton Office.



The Old Methodist Chapel Low Street | Lasingham, York

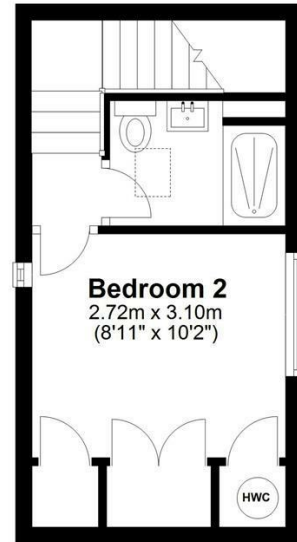
Ground Floor

Approx. 57.0 sq. metres (613.5 sq. feet)



First Floor

Approx. 19.0 sq. metres (204.2 sq. feet)



Total area: approx. 76.0 sq. metres (817.7 sq. feet)

The Old Methodist Chapel, Lasingham

VIEWING

Strictly by appointment with the Agents.

COUNCIL TAX BAND

E

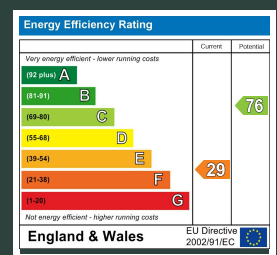
ENERGY PERFORMANCE RATING

F

St Georges House, Pickering YO18 7AE

t: 01751 472724

e: pickering@boultoncooper.co.uk



boultoncooper.co.uk



CONSUMER PROTECTION FROM UNFAIR TRADING REGULATIONS 2008

The description contained in this brochure is intended only to give a general impression of the property, its location and features, in order to help you to decide whether you wish to look at it. We do our very best to provide accurate information but we are human, so you should not allow any decisions to be influenced by it. For example any measurements are approximate and, where such things as central heating, plumbing, wiring or mains services are mentioned, we would advise you to take your own steps to check their existence and condition. Although we cannot accept any responsibility for any inferences drawn from this brochure or any inaccuracy in it, we shall always try to help you with any queries.

BoultonCooper for themselves and for the vendors or lessors of the property/properties, whose agents they are, give notice that (i) the particulars are produced in good faith, are set out as a general guide only and do not constitute any part of the contract, (ii) no person in the employment of BoultonCooper has any authority to make or give representation or warranty whatever in relation to this/these property/properties.

BC
Est. 1801